

Guide for Remote Control PDA

For Use with Bluetooth and a PC Running Windows 7

Table of Contents

A. Required Parts.....	3
B. PC Software Installation.....	3
C. Configure PC Software	4
D. Testing the Software Configuration & Physical Connection Test	6
E. Establish Wireless Bluetooth Connection between PDA and PC.....	7
Appendix A Quickstart Guide	10

A. Required Parts

NOTE: Windows Mobile Device Center and MyMobiler are freeware available online.

- HP PDA 21XX-27XX Series.
- PC Running Windows® 7.
- Bluetooth transmitter/receiver (Micro Bluetooth USB Adapter such as Rocketfish model RF-MRBTAD is recommended).
- Software to setup Bluetooth device, provided with the purchase of the device.
- Windows Mobile Device Center (WMDC), a Windows Mobile (PDA) interface application.
*A validation of a genuine installation of Windows is required to install this program.
- MyMobiler, a remote control application.

B. PC Software Installation

1. **INSTALL** Bluetooth device using software and instructions provided by the manufacturer. The Rocketfish model RF-MRBTAD instructions are as follows:
2. **PLUG** the Bluetooth adapter into a USB port on your computer.
3. **INSERT** the provided installation CD into the computer's CD drive. The introductory screen appears automatically. If the screen does not appear, run the autorun.exe file on the CD.
4. **CLICK** Install Bluetooth Micro Adapter Driver. The *Welcome* screen opens.
5. **CLICK Next** to begin the installation. The *License Agreement* screen opens.
6. **READ** the agreement, **CLICK** I accept the terms in the license agreement, then **CLICK** Next. The *Destination Folder* screen opens.
7. To install the driver in the default location, **CLICK Next**. The *Ready to Install the Program* screen opens.
8. **CLICK Install**. The *Found New Hardware Wizard* starts.
9. **CLICK Finish** if using Windows Vista™ or Windows® 7.
10. **RESTART** the computer to complete the installation.
11. **INSTALL** Window Mobile Device Center (WMDC).
 - a. **GOOGLE** WMDC phone.
 - b. **CLICK Install Windows Mobile Device Center...**link in Google search results.
(<http://www.microsoft.com/windowsphone/en-us/howto/wp6/sync/installing-wmdc.aspx>).
 - c. **FOLLOW** logical links on Microsoft's website. If PC version is 32-bit, **SELECT 32-bit WMDC** or if PC version is 64-bit, **SELECT 64-bit WMDC**. The *Validation Required* screen opens.
 - d. **CLICK Continue** to proceed to the *Genuine Microsoft Software* screen.
 - e. **CLICK Download** to initiate the download of the validation software. The *File Download – Security Warning* screen pops up.

- f. **CLICK Run** to agree with the security warning and complete the Windows validation. The Windows Mobile Device Center install should start automatically.
- g. **CLICK Run** to download WMDC. If the download of WMDC does not start automatically after 30 seconds, **CLICK Start Download** in the internet browser.
- h. The WMDC install software should complete automatically.

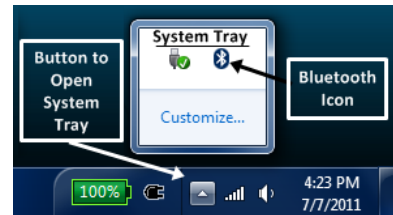


Figure 1

12. **INSTALL MyMobiler.**

- a. **GOOGLE** MyMobiler.
- b. **CLICK** Windows Mobile – My Mobiler link in Google search results.
- c. **CLICK Download MyMobiler (Setup)** from MyMobiler website. The *File Download – Security Warning* screen pops up.
- d. **CLICK Run** to agree with the security warning. You may need to verify twice; if yes, **CLICK Run** again. The *MyMobiler Setup* screen pops up.
- e. **CLICK Next** to proceed to the License Agreement screen.
- f. **CLICK I Agree** to confirm agreement with the license. The *Choose Install Location* screen pops up.
- g. **CLICK Install** to execute the MyMobiler install program. The *Completing the MyMobiler Setup Wizard* screen pops up.
- h. **CLICK Finish.** The software is now installed. The *Do you want to launch MyMobiler now* screen pops up.
- i. **CLICK No.** The software will be opened later.

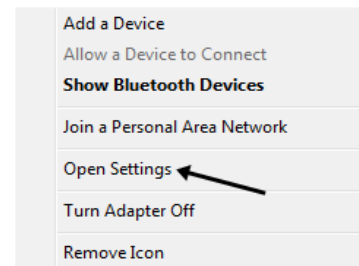


Figure 2

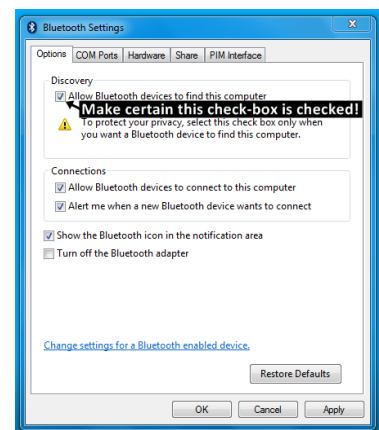


Figure 3

C. Configure PC Software

- 1. **CONFIGURE** Bluetooth device.
 - a. **LOCATE** and **CLICK** Windows 7 **Button to Open System Tray** to view contents (Figure 1).
 - b. **LOCATE** and **CLICK** **Bluetooth Icon** within the system tray (Figure 1). An options window opens (Figure 2).
 - c. **SELECT** **Open Settings.** The *Bluetooth Settings* window opens (Figure 3).
 - d. **CHECK** **Allow Bluetooth devices** to find this computer (Figure 3).

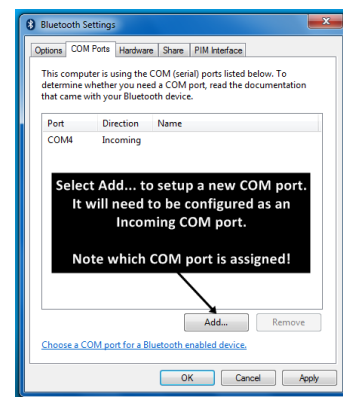


Figure 4

- e. **SELECT COM Ports** tab (Figure 4).
- f. **SELECT Add...** to setup a new COM port (Figure 4).
- g. **ENSURE Incoming (device initiates the connection)** is selected (Figure 5).
- h. **CLICK OK** to confirm settings and close the window (Figure 5). Windows should automatically assign an Incoming COM port (Figure 4).
- i. **NOTE** which COM port is assigned. The number is needed to setup Windows Mobile Device Center.

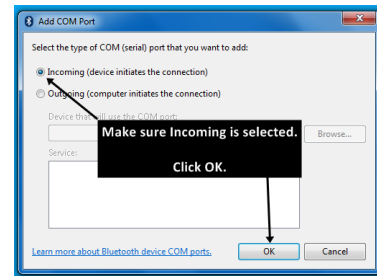


Figure 5

2. **CONFIGURE** Windows Mobile Device Center.



- a. **LOCATE** and **CLICK**  Windows 7 Start Menu.
- b. **LOCATE** and **CLICK**  **Windows Mobile Device Center.** *Windows Mobile Device Center* should open (Figure 6).
- c. **CURSOR OVER Mobile Device Settings** and **CLICK Connection settings** (Figure 6). *Connection Settings* window should open (Figure 7).
- d. **ENSURE** all check boxes are checked and the *Allow connections to one of the following:* is set for the **COM** port noted when the Bluetooth device was configured.
- e. **CLICK OK** to confirm settings and close the *Connection Settings* window. The *Windows Mobile Device Center* window can be left open or minimized.



Figure 6

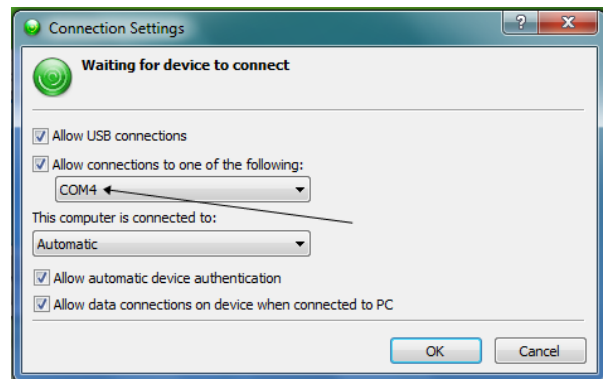


Figure 7

D. Testing the Software Configuration & Physical Connection Test

1. **PLUG** USB cable (connected to HP PDA cradle or cable) into the PC.
2. **PLACE** PDA in cradle or cable.
3. **TURN ON** power to PDA. Windows 7 should automatically recognize the PDA and install necessary drivers. WMDC *DO MORE with your Windows Mobile® powered device* should open.
4. **CLICK Don't Register**, unless you do want to register with Microsoft. Register with Microsoft if you want to provide them with feedback.
5. **LOOK FOR** the WMDC *Home* screen (Figure 8).
6. **CLICK Connect without setting up your device**, unless you want to setup the PDA to synchronize your Outlook contacts, calendar, e-mail, and other information on your device. From here, you are connected and can browse the contents of your PDA (Figure 8).



Figure 8

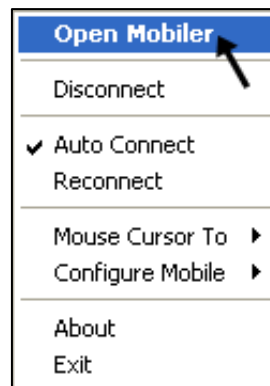


Figure 9

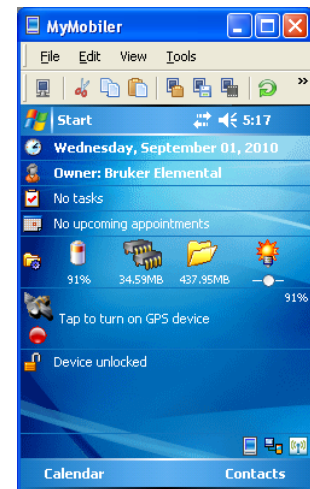




Figure 10

7. **LOCATE** and **LAUNCH** My Mobiler software, setup in Section B-3. The icon  may be found in a folder on the desktop. My Mobiler software will automatically install communication protocol on PDA through the WMDC application. You will now be able to find the My Mobiler icon in the system tray.
8. **CLICK My Mobiler** icon  then **OPEN Mobiler** (Figure 9) to launch the remote control software (Figure 10). You have proven the WMDC and MyMobiler software works and is ready for a wireless Bluetooth connection.
9. **DISCONNECT** PDA from PC. WMDC will show the PDA as *Not Connected* and My Mobiler will close.

E. Establish Wireless Bluetooth Connection between PDA and PC

1. **CONFIRM** PC software is ready for the prompt from the PDA.
 - a. **ENSURE** Bluetooth device is running and setup as in Section C-1.
 - b. **ENSURE** Windows Mobile Device Center is running and setup as in Section C-2.
 - c. **ENSURE** My Mobiler is installed and ready to go as confirmed in Section D.
2. Starting from the PDA's Windows Today screen, **TAP wireless icon** (Figure 11) to open *iPAQ Wireless*. An *iPAQ Wireless tutorial* may open. You can X out by tapping the X at the upper right corner of the screen.
3. **ENSURE** Bluetooth has been turned on:



Figure 11

- a. Bluetooth icon should be green as shown in Figure 12. **TAP Bluetooth icon** once to turn it green if it is grayed out.
- b. Blue LED at upper-left of PDA should blink.
4. **TAP Manager** (Figure 12) to open *Bluetooth Manager*.
5. **TAP New** (Figure 13) to create a new shortcut. The *Connection Wizard* screen will open.
6. **TAP ActiveSync via Bluetooth** (Figure 14). The *On Prepare the computer step 1* screen will open (Figure 15). The screen gives details of the configuration set in earlier sections, such as noting the COM port assigned to the Bluetooth device.

Note: ActiveSync is the Windows XP version of WMDC. The PDA setup is the same in either version.

7. **TAP Next** (Figure 15). The *On Prepare the computer step 2* screen will open (Figure 16). The screen gives details of configuration such as entering the COM port number assigned by the Bluetooth device to WMDC.



Figure 12

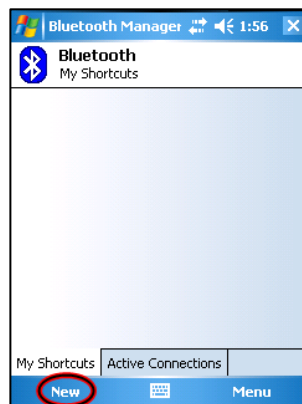


Figure 13



Figure 14



Figure 15

- TAP Next** (Figure 16). The Bluetooth Connection Wizard will begin a search for active Bluetooth devices. (Figure 17).



Figure 16



Figure 17



Figure 18

- LOCATE** your device and **TAP** it (Figure 17). A screen to create a shortcut opens (Figure 18).
- TAP Finish** to accept default name (Figure 18). A bubble will pop up near the system tray of the PC stating that *A Bluetooth device trying to connect* (Figure 19).

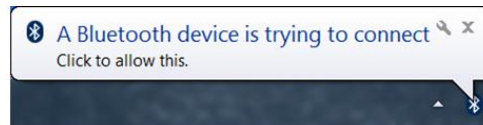


Figure 19

- CLICK** the bubble to allow the PDA to connect with the PC via Bluetooth. The PC will open an *Add a device* window.

Note: The steps for pairing will need to be done quickly. If delayed approximately 30 seconds or more, the connection will fail. If failed, **TAP OK** and the **TAP** created shortcut again to repeat the steps.

- ENTER** a pairing code for the device (Figure 20). This pairing code may be any series of number or letters, such as 0000. **This same code will need to be entered at the next step.**

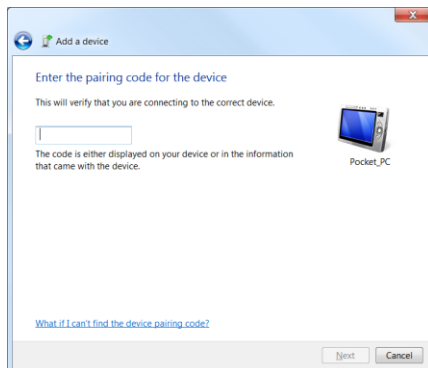


Figure 20

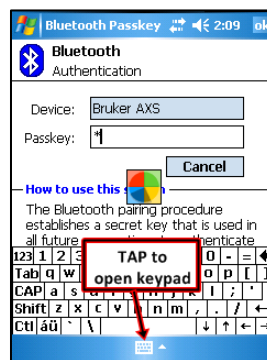


Figure 21

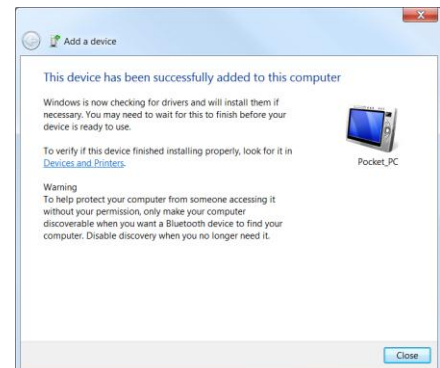


Figure 22

14. The PDA will prompt for a passkey at the *Authentication* screen. **ENTER** the passkey and **TAP OK** at the upper right of the PDA screen when finished (Figure 21).
 - a. On the PC, the *Add a device* window should confirm the connection was completed successfully (Figure 22).
 - b. WMDC should connect automatically. If connection is not made, see Section C-2.

NOTE: The following steps can be compared with those as found in section D. The connection is now being completed wirelessly.

15. **LOCATE** and **CLICK My Mobiler** icon in system tray.
16. **CLICK Open Mobiler** (Figure 23) to launch the remote control software (Figure 24). You may minimize windows that are not needed, etc. On the PDA, you may X out of Bluetooth Manager and start the BrukerS1 software as you would normally (don't forget to connect it back to the analyzer). You can now control the PDA through the PC.

NOTE: When you're not using the remote control software or Bluetooth, disable the connection by pressing the Bluetooth icon at the iPAQ wireless screen (Figure 25). The icon will gray out, the PDA's Bluetooth will turn off, and the PC will disconnect.



Figure 23

Figure 24

Figure 25

Appendix A Quickstart Guide

NOTE: After PDA and PC have been paired for the first time, assuming all settings are still alive and active, remote control of the PDA is as simple as 1, 2, 3! See below.

